



Product Compendium 2026

Complete product list
Guidance
Support resources



Our purpose is to give patients the **best experience possible** of medical nutrition whilst delivering the most **innovative solutions** and **better value** to the healthcare professional.

Founded in 2012 by dietitian Paul Gough, Nualtra is a dedicated supplier of medical nutrition and is currently the fastest growing medical nutrition company in the UK & Ireland.

◆ Republic of Ireland Office

Ground Floor Left of Roselawn Suite 1
Roselawn House
National Technology Park
Co. Limerick, Ireland
t: 0035361 518413
e: support@nualtra.ie

◆ UK Office

Basepoint Business Centre
Tewkesbury
Gloucestershire GL20 8SD
t: 0118 4532853
e: support@nualtra.co.uk

Contents

Order Information - UK	4-5
Order Information - Ireland	6-7
Oral Supplement Range	7
Allergen & Religious Information	8-9
Product details and nutritional composition	
01 Altrajuce	10-11
02 Altraplen Compact	12-13
03 Altraplen Compact Daily	14-15
04 Altraplen Energy	16-17
05 Altraplen Protein	18-19
06 Altrapro	20-21
07 Altrashot	22-23
08 Altrini Compact Fibre	24-25
09 Foodlink Complete	26-27
10 Foodlink Complete Compact	28-29
11 Foodlink Complete with Fibre	30-31
12 Foodlink Extra	32-33
13 Foodlink Smoothie	34-35
14 Nutricrem	36-37
15 Swalloweze Clear	38
Nutritionally Complete Volumes - UK	39
Nutritionally Complete Volumes - Ireland	40
Sample Service	41
ForefrontRx.com	42

Ordering Information - UK

Product	Unit	Pack Type	PIP code	Barcode
Altrajuce				
Apple	1 x 200ml	Carton	413-5562	5391527580706
Blackcurrant	1 x 200ml	Carton	413-5547	5391527580744
Orange	1 x 200ml	Carton	413-5570	5391527580720
Strawberry	1 x 200ml	Carton	413-5554	5391527580768
Starter Pack	4 x 200ml	Carton	413-7105	5391527580782
Altraplen Compact				
Vanilla	4 x 125ml	Bottle	381-1460	5392000079908
Strawberry	4 x 125ml	Bottle	381-1452	5392000079915
Hazel Chocolate	4 x 125ml	Bottle	394-9534	5392000089921
Banana	4 x 125ml	Bottle	394-9526	5392000089938
Starter Pack	4 x 125ml	Bottle	395-0870	5391527580003
Altraplen Compact Daily				
Vanilla	1 x 250ml	Carton	419-3744	5391527580805
Strawberry	1 x 250ml	Carton	419-3728	5391527580829
Hazel Chocolate	1 x 250ml	Carton	419-3751	5391527580843
Banana	1 x 250ml	Carton	419-3736	5391527580867
Starter Pack	4 x 250ml	Carton	419-3710	5391527580881
Altraplen Energy				
Vanilla	1 x 200ml	Carton	415-3375	5391527581383
Strawberry	1 x 200ml	Carton	415-3383	5391527581406
Chocolate	1 x 200ml	Carton	415-3391	5391527581420
Banana	1 x 200ml	Carton	415-3474	5391527581444
Starter Pack	4 x 200ml	Carton	417-4397	5391527581468
Altraplen Protein				
Vanilla	4 x 200ml	Bottle	381-1486	5392000079922
Strawberry	4 x 200ml	Bottle	381-1478	5392000079939
Starter Pack	2 x 200ml	Bottle	408-5981	5391527580294
Altrapro				
Berry	15 x 60ml	Bottle	436-1598	5391527582267
Lemon & Lime	15 x 60ml	Bottle	436-1796	5391527582281
Starter Pack	2 x 60ml	Bottle		5391527582304
Altrashot				
Vanilla	4 x 120ml	Bottle	404-2271	5392000106765
Strawberry	4 x 120ml	Bottle	404-2263	5391527580096
Neutral	4 x 120ml	Bottle	415-1122	5391527581369
Starter Pack	2 x 120ml	Bottle	405-0068	5391527580133
Altrini Compact Fibre				
Vanilla	4 x 125ml	Bottle	428-4824	5391527581000
Strawberry	4 x 125ml	Bottle	428-4816	5391527581024
Starter Pack	2 x 125ml	Bottle		5391527582328
Foodlink Complete				
Vanilla	7 x 57g 1 x 1596g	Sachet Tub	405-1363 406-6890	5391527580171 5391527580331
Chocolate	7 x 57g 1 x 1596g	Sachet Tub	399-0066 406-6874	5391527580041 5391527580379
Strawberry	7 x 57g 1 x 1596g	Sachet Tub	399-0033 406-6882	5392000106703 5391527580355

Ordering Information - UK

Product	Unit	Pack Type	PIP code	Barcode
Banana	7 x 57g 1 x 1596g	Sachet Tub	399-0041 406-6858	5392000106741 5391527580416
Natural	7 x 57g 1 x 1596g	Sachet Tub	399-0058 406-6866	5391527580065 5391527580393
Starter Pack	5 x 57g	Sachet	405-8954	5391527580270
Foodlink Complete Compact				
Vanilla	7 x 57g	Sachet	410-7462	5391527580584
Chocolate	7 x 57g	Sachet	410-7413	5391527580621
Strawberry	7 x 57g	Sachet	410-7421	5391527580607
Banana	7 x 57g	Sachet	410-7447	5391527580645
Natural	7 x 57g	Sachet	410-7439	5391527580669
Starter pack	5 x 57g	Sachet	410-7454	5391527580683
Foodlink Complete with Fibre				
Vanilla	7 x 63g	Sachet	399-0074	5392000089983
Chocolate	7 x 63g	Sachet	405-6032	5391527580256
Strawberry	7 x 63g	Sachet	405-6040	5391527580195
Banana	7 x 63g	Sachet	405-6024	5391527580218
Natural	7 x 63g	Sachet	405-6156	5391527580232
Starter pack	5 x 63g	Sachet	408-0651	5391527580508
Foodlink Extra				
Vanilla	7 x 85g	Sachet	421-9945	5391527581727
Chocolate	7 x 85g	Sachet	421-9937	5391527581765
Strawberry	7 x 85g	Sachet	421-9952	5391527581703
Banana	7 x 85g	Sachet	421-9929	5391527581741
Starter pack	4 x 85g	Sachet	421-9960	5391527581901
Foodlink Smoothie				
Red Berry	7 x 66g	Sachet	422-5009	5391527581802
Tropical	7 x 66g	Sachet	422-4994	5391527581826
Peach	7 x 66g	Sachet	422-5017	5391527581840
Orange & Mango	7 x 66g	Sachet	422-4986	5391527581864
Starter pack	4 x 66g	Sachet	422-5025	5391527581888
Nutricrem				
Vanilla	4 x 125g	Pot	381-1445	5392000079946
Strawberry	4 x 125g	Pot	381-1437	5392000079953
Chocolate Orange	4 x 125g	Pot	394-9666	5392000089969
Mint Chocolate	4 x 125g	Pot	408-6039	5391527580546
Starter Pack (4 pack)	4 x 125g	Pot	409-0858	5391527580560
Swalloweze Clear				
Clear Gum Thickeners	1 x 165g	Tub	403-2124	5391527580157
Clear Gum Thickeners	48 x 1.9g	Sachet	409-0866	5391527580522

Ordering Information - Ireland

Product	Unit	Pack Type	GMS code	Barcode
Altrajuce				
Apple	1 x 200ml	Carton	85153	5391527580706
Blackcurrant	1 x 200ml	Carton	85153	5391527580744
Orange	1 x 200ml	Carton	85153	5391527580720
Strawberry	1 x 200ml	Carton	85153	5391527580768
Starter Pack	4 x 200ml	Carton	85153	5391527580782
Altraplen Compact				
Vanilla	4 x 125ml	Bottle	82510	5392000079908
Strawberry	4 x 125ml	Bottle	82510	5392000079915
Hazel Chocolate	4 x 125ml	Bottle	82510	5392000089921
Banana	4 x 125ml	Bottle	82510	5392000089938
Starter Pack	4 x 125ml	Bottle	82510	5391527580003
Altraplen Compact Daily				
Vanilla	1 x 250ml	Carton	81115	5391527580805
Strawberry	1 x 250ml	Carton	81115	5391527580829
Hazel Chocolate	1 x 250ml	Carton	81115	5391527580843
Banana	1 x 250ml	Carton	81115	5391527580867
Starter Pack	4 x 250ml	Carton	81115	5391527580881
Altraplen Protein				
Vanilla	4 x 200ml	Bottle	82500	5392000079922
Strawberry	4 x 200ml	Bottle	82500	5392000079939
Starter Pack	2 x 200ml	Bottle	82500	5391527580294
Altrashot				
Vanilla	4 x 120ml	Bottle	85071	5392000106765
Strawberry	4 x 120ml	Bottle	85071	5391527580096
Neutral	4 x 120ml	Bottle	85071	5391527581369
Starter Pack	2 x 120ml	Bottle	85071	5391527580133
Altrapro				
Berry	15 x 60ml	Bottle	83925	5391527582267
Lemon & Lime	15 x 60ml	Bottle	83925	5391527582281
Starter Pack	2 x 60ml	Bottle	83925	5391527582304
Altrini Compact Fibre				
Vanilla	4 x 125ml	Bottle	94421	5391527581000
Strawberry	4 x 125ml	Bottle	94421	5391527581024
Starter Pack	2 x 125ml	Bottle	94421	5391527582328
Foodlink Complete				
Vanilla	7 x 57g	Sachet	85067	5391527580171
Chocolate	7 x 57g	Sachet	85067	5391527580041
Strawberry	7 x 57g	Sachet	85067	5392000106703
Banana	7 x 57g	Sachet	85067	5392000106741
Natural	7 x 57g	Sachet	85067	5391527580065
Starter Pack	5 x 57g	Sachet	83248	5391527580270
Foodlink Complete with Fibre				
Vanilla	7 x 63g	Sachet	85068	5392000089983
Chocolate	7 x 63g	Sachet	85068	5391527580256
Strawberry	7 x 63g	Sachet	85068	5391527580195
Banana	7 x 63g	Sachet	85068	5391527580218
Natural	7 x 63g	Sachet	85068	5391527580232
Starter Pack	5 x 63g	Sachet	85068	5391527580508

Ordering Information - Ireland

Product	Unit	Pack Type	GMS code	Barcode
Foodlink Extra				
Vanilla	7 x 85g	Sachet	81342	5391527581727
Chocolate	7 x 85g	Sachet	81342	5391527581765
Strawberry	7 x 85g	Sachet	81342	5391527581703
Banana	7 x 85g	Sachet	81342	5391527581741
Starter Pack	4 x 85g	Sachet	81342	5391527581901
Nutricrem				
Vanilla	4 x 125g	Pot	83065	5392000079946
Strawberry	4 x 125g	Pot	83065	5392000079953
Chocolate Orange	4 x 125g	Pot	83065	5392000089969
Mint Chocolate	4 x 125g	Pot	83065	5391527580546
Starter Pack	4 x 125g	Pot	83065	5391527580027
Swalloweze Clear				
Clear Gum Thickener	1 x 165g	Tub	85064	5391527580157
Clear Gum Thickener	48 x 1.9g	Sachet	-	5391527580522

Nualtra's Oral Supplement Range



Allergen & Religious Information

Product	Egg free	Free from fish products	Gluten free	Lactose free*	Milk free	Nut free	Soya free	Wheat free	Suitable for Vegetarians	Suitable for Vegan	Halal Certified	Kosher Certified
Altrajuce	✓	✓	✓	✓	✗	✓	✓	✓	¹ ✓	✗	² ✗	³ ✗
Altraplen Compact/Daily	✓	✓	✓	✓	✗	✓	✗	✓	¹ ✓	✗	² ✗	³ ✗
Altraplen Energy	✓	✓	✓	✓	✗	✓	✓	✓	✓	✗	³ ✗	³ ✗
Altraplen Protein	✓	✓	✓	✓	✗	✓	✗	✓	¹ ✓	✗	² ✗	³ ✗
Altrashot	✓	✓	✓	✓	✗	✓	✓	✓	¹ ✓	✗	² ✗	³ ✗
Altrapro	✓	✓	✓	✓	✗	✓	✓	✓	✓	✗	✓	³ ✗
Altrini Compact Fibre	✓	✓	✓	✗	✗	✓	✗	✓	✓	✗	✓	³ ✗
Foodlink Complete	✓	✓	✓	✗	✗	✓	✗	✓	✓	✗	✓	³ ✗
Foodlink Extra	✓	✓	✓	✗	✗	✓	✗	✓	✓	✗	✓	³ ✗

Allergen & Religious Information

Product	Egg free	Free from fish products	Gluten free	Lactose free*	Milk free	Nut free	Soya free	Wheat free	Suitable for Vegetarians	Suitable for Vegan	Halal Certified	Kosher Certified
Foodlink Smoothie	✓	✓	✓	✓	⁴ ✓	✓	✗	✓	✓	✓	✓	³ ✗
Nutricrem Choc Orange/Mint	✓	✓	✓	✓	✗	✓	✗	✓	¹ ✓	✗	✓	³ ✗
Nutricrem Strawberry/Vanilla	✓	✓	✓	✓	✗	✓	✗	✓	¹ ✓	✗	² ✗	³ ✗
Swalloweze Clear	✓	✓	✓	✓	✓	✓	✓	✓	✓	✓	✓	✓

Notes

* Lactose free is defined in our products as containing < 0.5g/100ml or 100g.

1. Strawberry and Blackcurrant flavour contains colouring E120, which is also known as cochineal or carmine, and is not suitable for many vegetarians.
2. Strawberry and Blackcurrant flavours are not suitable for Halal. All other flavours do not contain any ingredients that are forbidden; however, the manufacturing process is not observed by the relevant religious body.
3. Does not contain any ingredients that are forbidden, however, the manufacturing process is not observed by the relevant religious body.
4. The product does not contain milk, however it is manufactured where milk products are also made.

Altrajuce

Altrajuce is a Food for Special Medical Purposes for use under medical supervision.

- ◆ A ready to drink, juice style oral nutritional supplement containing 300kcal and 7.8g protein in 200ml.
- ◆ May be used to supplement a patient's dietary intake. Not suitable as a sole source of nutrition.
- ◆ Available in 200ml tetra. Starter pack also available including 4 x 200ml tetra.

Flavours: Available in Apple, Blackcurrant, Orange and Strawberry flavours.

Allergen information: Contains milk protein. Gluten free, lactose free and soya free.

Indications: For enteral use only. Must be used under medical supervision. May be used for the dietary management of patients with or at risk of developing disease related malnutrition as determined by appropriate nutritional screening.

Contraindications: Not suitable for children under 3 years. Not suitable for patients with Galactosaemia or in patients with cow's milk protein allergy.

Precautions: Not suitable for use in children under 3 years and use of this product in children under 6 years should be closely monitored by a dietitian or clinician.

Directions for use: Ready to drink. Altrajuce can be consumed frozen, chilled, at room temperature or gently heated.

- ◆ Shake well before use.

Storage: Altrajuce should be stored in a cool, dry place (below 25°C). Once opened consume within 4 hours or store in a refrigerator and consume within 24 hours. Discard unused contents thereafter.

Shelf life: 12 months from date of manufacture. See top of tetra and outer packaging for best before date.

Region of origin: EU.

This product is packaged in a protective atmosphere.

INGREDIENTS:

For all other flavours please see individual packaging. Refer to full data sheet on Nualtra.com.

APPLE: Water, Glucose syrup, Sugar, Maltodextrin, Cow's **milk** proteins, Acidity regulator: Citric acid, Phosphoric acid, Hydrochloric acid, Potassium chloride, Magnesium chloride, Sodium chloride, Calcium chloride, Choline bitartrate, Sodium L-ascorbate, Flavouring, Minerals (Iron lactate, Zinc sulphate, manganese sulphate, copper sulphate, sodium fluoride, chromium chloride, sodium molybdate, Sodium selenite, Potassium iodide) Vitamins (Ascorbic acid, DL- α -tocopherol acetate, Nicotinamide, Retinol acetate, Calcium-D-pantothenate, Cholecalciferol, Thiamine mononitrate, Pyridoxine hydrochloride, Riboflavin, Vitamin K, Folic acid, Biotin, Cyanocobalamin).

Average content	Units	100ml	200ml tetra
Energy	KJ Kcal	636 150	1272 300
Fat (0 en%)	g	0	0
of which saturates	g	0	0
of which monounsaturates	g	0	0
of which polyunsaturates	g	0	0
Carbohydrate (89.6 en%)	g	33.5	67
of which sugars	g	13.5	27
Fibre (0%)	g	0	0
Protein (10.4 en%)	g	3.9	7.8
Salt	g	0.03	0.06
VITAMINS			
Vitamin A	µg-RE	160	320
Vitamin D	µg	1.3	2.6
Vitamin E	mg α-TE	3.2	6.4
Vitamin K	µg	9.6	19.2
Vitamin C	mg	29	58
Thiamin (B1)	mg	0.24	0.48
Riboflavin (B2)	mg	0.24	0.48
Niacin	mg NE	2.4	4.8
Vitamin B6	mg	0.24	0.48
Folic Acid	µg	51	102
Vitamin B12	µg	0.48	0.96
Biotin	µg	6.4	12.8
Pantothenic Acid	mg	0.8	1.6
MINERALS			
Sodium	mmol mg	0.41 10	0.82 20
Potassium	mmol mg	0.19 9	0.38 18
Chloride	mmol mg	2.81 100	5.62 200
Calcium	mmol mg	0.8 30	1.6 60
Phosphorus	mmol mg	0.4 12	0.8 24
Magnesium	mmol mg	0.1 2	0.2 4
Iron	mg	2.3	4.6
Zinc	mg	2.7	5.4
Copper	mg	0.25	0.50
Manganese	mg	0.59	1.18
Selenium	µg	13	26
Chromium	µg	13	26
Molybdenum	µg	14	28
Iodine	µg	25	50
Flouride	mg	0.18	0.36
Osmolarity	mOsmol/L	428	
Osmolality	mOsmol/kg/H ₂ O	655	
Lactose	g	0.02	0.04

Altraplen

COMPACT

Altraplen Compact is a Food for Special Medical Purposes for use under medical supervision.

- ◆ A ready to drink, milkshake style oral nutritional supplement containing 300kcal and 12g protein in 125ml.
- ◆ May be used as a sole source of nutrition or used to supplement a patient's dietary intake.
- ◆ Available in 4 x 125ml cluster packs. Starter pack also available including 4 x 125ml bottles.

Flavours: Available in Vanilla, Strawberry, Hazel Chocolate (Nut free) and Banana flavours.

Allergen information: Contains milk protein and soya. Hazel Chocolate only - contains sulphites. Gluten free and lactose free.

Indications: For enteral use only. Must be used under medical supervision. May be used for the dietary management of patients with or at risk of developing disease related malnutrition as determined by appropriate nutritional screening.

Contraindications: Not suitable for children under 3 years. Not suitable for patients with Galactosaemia or in patients with cow's milk protein allergy.

Precautions: Not suitable for use in children under 3 years and use of this product in children under 6 years should be closely monitored by a dietitian or clinician.

Directions for use: Ready to drink. Altraplen Compact can be consumed frozen, chilled, at room temperature or gently heated.

- ◆ Shake well before use.

Storage: Altraplen Compact should be stored in a cool, dry place (below 25°C). Once opened consume within 4 hours or store in a refrigerator and consume within 24 hours. Discard unused contents thereafter.

Shelf life: 12 months from date of manufacture. See side of bottle and outer packaging for best before date.

Region of origin: EU.

This product is packaged in a protective atmosphere.

INGREDIENTS:

For all other flavours please see individual packaging. Refer to full data sheet on Nualtra.com.

VANILLA: Milk protein concentrate, Water, Glucose syrup, Rapeseed oil, Sucrose, Milk protein, Soya protein, Magnesium citrate, Sodium hydrogen phosphate, Tripotassium citrate, Emulsifier: Mono and diglycerides of fatty acids (E471), Potassium Chloride, Potassium phosphate, Choline chloride. Vitamins: (Ascorbic acid, Vit A acetate, Nicotinamide, D-biotin, Vit D3, Vit B12, Pyridoxine HCl, Vit K, Thiamine mononitrate, Riboflavin, Vit E acetate, Calcium D pantothenate, Folic acid), Flavouring, Potassium hydroxide, Trisodium citrate, Colour: Natural carotene, Ferric pyrophosphate, Zinc sulphate, Sodium selenite, Manganese sulphate monohydrate, Copper sulphate, Sodium fluoride, Chromium chloride, Sodium molybdate, Potassium iodide.

Average content	Units	100ml	125ml bottle
Energy	KJ Kcal	1008 240	1260 300
Fat (36 en%)	g	9.6	12
of which saturates	g	0.92	1.15
of which monounsaturates	g	5.96	7.45
of which polyunsaturates	g	2.73	3.41
Carbohydrate (48 en%)	g	28.8	36
of which sugars	g	11.6	14.5
Fibre (0%)	g	0	0
Protein (16 en%)	g	9.6	12
Salt	g	0.25	0.31
VITAMINS			
Vitamin A	µg-RE	200	250
Vitamin D	µg	2	2.5
Vitamin E	mg α-TE	2.8	3.5
Vitamin K	µg	12	15
Vitamin C	mg	24	30
Thiamin (B1)	mg	0.5	0.6
Riboflavin (B2)	mg	0.5	0.6
Niacin	mg NE	4.8	6
Vitamin B6	mg	0.6	0.8
Folic Acid	µg	68	85
Vitamin B12	µg	0.8	1
Biotin	µg	9.6	12
Pantothenic Acid	mg	1.6	2
MINERALS			
Sodium	mmol mg	4.4 101	5.5 126
Potassium	mmol mg	6.2 240	7.75 300
Chloride	mmol mg	2.5 89	3.1 111
Calcium	mmol mg	4.2 168	5.25 210
Phosphorus	mmol mg	5.2 160	6.5 200
Magnesium	mmol mg	1.3 32	1.6 40
Iron	mg	3.2	4
Zinc	mg	2.5	3.1
Copper	mg	0.41	0.5
Manganese	mg	0.8	1
Selenium	µg	14	17.5
Chromium	µg	16	20
Molybdenum	µg	20	25
Iodine	µg	30	37.5
Fluoride	mg	0.2	0.25
Osmolarity	mOsmol/L	901-966	
Osmolality	mOsmol/kg/H ₂ O	1270-1360	
Lactose	g	0.29	0.32

Altraplen

COMPACT DAILY

Altraplen Compact Daily is a Food for Special Medical Purposes for use under medical supervision.

- ◆ A ready to drink, milkshake style oral nutritional supplement containing 600kcal and 24g protein in 250ml.
- ◆ May be used as a sole source of nutrition or used to supplement a patient's dietary intake.
- ◆ Available in 250ml tetra cartons. Starter pack also available including 4 x 250ml tetra.

Scan QR code for a short video showing the key features of this product ➔

SCAN ME



Flavours: Available in Vanilla, Strawberry, Hazel Chocolate (Nut free) and Banana flavours.

Allergen information: Contains milk protein and soya. Gluten free and lactose free.

Indications: For enteral use only. Must be used under medical supervision. May be used for the dietary management of patients with or at risk of developing disease related malnutrition as determined by appropriate nutritional screening.

Contraindications: Not suitable for children under 3 years. Not suitable for patients with Galactosaemia or in patients with cow's milk protein allergy.

Precautions: Not suitable for use in children under 3 years and use of this product in children under 6 years should be closely monitored by a dietitian or clinician.

Directions for use: Ready to drink. Altraplen Compact Daily can be consumed frozen, chilled, at room temperature or gently heated.

- ◆ Shake well before use.

Storage: Altraplen Compact Daily should be stored in a cool, dry place (below 25°C). Once opened consume within 12 hours or store in a refrigerator and consume within 24 hours. Discard unused contents thereafter.

Shelf life: 12 months from date of manufacture. See top of tetra and outer packaging for best before date.

Region of origin: EU.

This product is packaged in a protective atmosphere.

INGREDIENTS:

For all other flavours please see individual packaging. Refer to full data sheet on Nualtra.com.

VANILLA: Water, Glucose syrup, Rapeseed oil, **Milk** protein, Saccharose, **Soy** protein, Thickener: Sodium carboxymethyl cellulose (E466), Microcrystalline cellulose (E460i), Carrageenan (E407), Emulsifier: **Soy** lecithin (E322), Mono and diglyceride of fatty acids (E471), Flavour, Colour: Beta-carotene, Potassium phosphate (E340ii), Potassium citrate (E332ii), Sodium citrate (E331iii), Sodium phosphate (E339ii), Potassium chloride (E508), Calcium carbonate (E170), Acidity regulator: Citric acid (E330), Magnesium hydroxide (E528), Potassium hydroxide (E525), Stabiliser: Sodium polyphosphate, Vitamins: (Retinyl acetate, Thiamin mononitrate, Riboflavin, Pyridoxine hydrochloride, Cyanocobalamin, Pteroylmonoglutamic acid, D-biotin, D-pantothenate, calcium, Sodium-L- ascorbate, Cholecalciferol, DL-alpha tocopheryl acetate, Phytomenadione, Nicotinamide) Minerals: Ferrous lactate, Zinc sulphate, Manganese sulphate, Cupric sulphate, Sodium fluoride, Chromium chloride, Sodium molybdate, Sodium selenite, Choline bitartrate, Potassium iodide).

Average content	Units	100ml	250ml tetra
Energy	KJ Kcal	1008 240	2520 600
Fat (36 en%)	g	9.6	24
of which saturates	g	0.58	1.45
of which monounsaturates	g	5.86	14.65
of which polyunsaturates	g	3.17	7.93
Carbohydrate (48 en%)	g	28.8	72
of which sugars	g	11.3	28.3
Fibre (0%)	g	0	0
Protein (16 en%)	g	9.6	24
Salt	g	0.25	0.63
VITAMINS			
Vitamin A	µg-RE	240	600
Vitamin D	µg	1.9	4.75
Vitamin E	mg α-TE	4.8	12
Vitamin K	µg	14	35
Vitamin C	mg	43	107.5
Thiamin (B1)	mg	0.36	0.90
Riboflavin (B2)	mg	0.36	0.90
Niacin	mg NE	3.6	9.0
Vitamin B6	mg	0.36	0.90
Folic Acid	µg	77	192.5
Vitamin B12	µg	0.72	1.80
Biotin	µg	9.6	24
Pantothenic Acid	mg	1.2	3
MINERALS			
Sodium	mmol mg	4.3 100	10.8 250
Potassium	mmol mg	6.1 240	15.3 600
Chloride	mmol mg	2.5 89	6.25 222.5
Calcium	mmol mg	4.2 168	10.5 420
Phosphorus	mmol mg	3.2 100	8.0 250
Magnesium	mmol mg	1.3 32	3.3 80
Iron	mg	3.1	7.8
Zinc	mg	3.6	9
Copper	mg	0.33	0.83
Manganese	mg	0.79	1.98
Selenium	µg	17	42.5
Chromium	µg	17	42.5
Molybdenum	µg	19	47.5
Iodine	µg	34	85
Fluoride	mg	0.22	0.55
Osmolarity	mOsmol/L	704	
Osmolality	mOsmol/kg/H ₂ O	1300	
Lactose	g	0.01	0.025

Altraplen Energy is a Food for Special Medical Purposes for use under medical supervision.

- ◆ A ready to drink milkshake style oral nutritional supplement containing 300kcal and 12g protein in 200ml.
- ◆ May be used to supplement a patient's dietary intake or suitable as a sole source of nutrition.
- ◆ Available in 200ml tetra. Starter pack also available including 4 x 200ml tetra.

Flavours: Available in Vanilla, Strawberry, Chocolate and Banana flavours.

Allergen information: Contains milk protein. Gluten free, lactose free and soya free.

Indications: For enteral use only. Must be used under medical supervision. May be used for the dietary management of patients with or at risk of developing disease related malnutrition as determined by appropriate nutritional screening.

Contraindications: Not suitable for children under 3 years. Not suitable for patients with Galactosaemia or in patients with cow's milk protein allergy.

Precautions: Not suitable for use in children under 3 years and use of this product in children under 6 years should be closely monitored by a dietitian or clinician.

Directions for use: Ready to drink. Altraplen Energy can be consumed frozen, chilled, at room temperature or gently heated.

- ◆ Shake well before use.

Storage: Altraplen Energy should be stored in a cool, dry place (below 25°C). Once opened consume within 4 hours or store in a refrigerator and consume within 24 hours. Discard unused contents thereafter.

Shelf life: 12 months from date of manufacture. See top of tetra and outer packaging for best before date.

Region of origin: EU.

This product is packaged in a protective atmosphere.

INGREDIENTS:

For all other flavours please see individual packaging. Refer to full data sheet on Nualtra.com.

VANILLA: Water, Maltodextrin, **Milk** protein, Vegetable oil (Rapeseed oil, Sunflower oil), Saccharose, Emulsifier: Sunflower lecithin, Thickener: Gellan gum, Sodium phosphate, Calcium carbonate, Magnesium chloride, Potassium chloride, Tri Potassium citrate, Potassium phosphate, Potassium hydroxide, Tri Sodium citrate, Magnesium hydroxide, Sodium chloride, Cholinbitartrate, Sodium hydroxide, Acidity regulator: Lactic acid, Citric acid, Colouring: Betacarotene, Flavouring, Minerals (Iron lactate, Zinc sulphate, Manganese sulphate, Copper sulphate, Sodium fluoride, Chromium chloride, Sodium molybdate, Sodium selenite, Potassium iodide) Vitamins (Retinol acetate, Thiamine mononitrate, Riboflavin, Pyridoxine hydrochloride, Cyanocobalamin, Pteroylglutamic acid, Biotin D, Calcium D Pantothenate, Ascorbic acid, Cholecalciferol, DL- α -Tocopheryl acetate, Phytomenadione, Nicotinamide).

Altraplen Energy		Banana, Strawberry Vanilla		Chocolate	
Average content	Units	Per 100ml	Per 200ml tetra	Per 100ml	Per 200ml tetra
Energy	KJ Kcal	640 150	1280 300	640 150	1280 300
Fat (35 en%)	g	5.8	11.6	5.8	11.6
of which saturates	g	0.52	1.04	0.57	1.14
of which monounsaturates	g	2.85	5.7	2.80	5.60
of which polyunsaturates	g	2.46	4.92	2.43	4.86
Carbohydrate (49 en%)	g	18.5	37	18.5	37
of which sugars	g	6.5	13	6.5	13
Fibre (0 en%)	g	0	0	0	0
Protein (16 en%)	g	6	12	6	12
Salt	g	0.23	0.46	0.23	0.46
VITAMINS					
Vitamin A	µg-RE	150	300	150	300
Vitamin D	µg	1.2	2.4	1.2	2.4
Vitamin E	mg α-TE	3	6	3	6
Vitamin K	µg	9	18	9	18
Vitamin C	mg	27	54	27	54
Thiamin (B1)	mg	0.23	0.46	0.23	0.46
Riboflavin (B2)	mg	0.23	0.46	0.23	0.46
Niacin	mg NE	2.3	4.6	2.3	4.6
Vitamin B6	mg	0.23	0.46	0.23	0.46
Folic Acid	µg	48	96	48	96
Vitamin B12	µg	0.45	0.9	0.45	0.9
Biotin	µg	6	12	6	12
Pantothenic Acid	mg	0.75	1.5	0.75	1.5
Choline	mg	61	122	61	122
MINERALS					
Sodium	mmol	3.9	7.8	3.9	7.8
	mg	90	180	90	180
Potassium	mmol	4.1	8.2	4.1	8.2
	mg	159	318	159	318
Chloride	mmol	2.5	5	2.5	5
	mg	87	174	87	174
Calcium	mmol	2.3	4.6	2.3	4.6
	mg	91	182	91	182
Phosphorus	mmol	3	6	3	6
	mg	94	188	94	188
Magnesium	mm ol	0.9	1.8	0.9	1.8
	mg	23	46	23	46
Iron	mg	2	4	2	4
Zinc	mg	2.3	4.6	2.3	4.6
Copper	mg	0.21	0.42	0.21	0.42
Manganese	mg	0.5	1	0.5	1
Selenium	µg	11	22	11	22
Chromium	µg	11	22	11	22
Molybdenum	µg	12	24	12	24
Iodine	µg	21	42	21	42
Fluoride	mg	0.15	0.3	0.15	0.3
Osmolarity	mOsmol/L	682		682	
Osmolality	mOsmol/kg/H ₂ O	626		626	
Lactose	g	<0.1	<0.1	<0.1	<0.1

Altraplen

PROTEIN

Altraplen Protein is a Food for Special Medical Purposes for use under medical supervision.

- ◆ A ready to drink, milkshake style oral nutritional supplement containing 300kcal and 20g protein in 200ml.
- ◆ May be used as a sole source of nutrition or used to supplement a patient's dietary intake.
- ◆ Available in 4 x 200ml cluster packs. Starter pack also available including 2 x 200ml bottles.

Flavours: Available in Vanilla and Strawberry flavours.

Allergen information: Contains milk protein and soya. Gluten free and lactose free.

Indications: For enteral use only. Must be used under medical supervision. May be used for the dietary management of patients with increased nutritional requirements as a result of chronic wounds, post-surgery or any patient with or at risk of developing disease related malnutrition as determined by appropriate nutritional screening.

Contraindications: Not suitable for children under 3 years. Not suitable for patients with Galactosaemia or in patients with cow's milk protein allergy.

Precautions: Not suitable for use in children under 3 years and use of this product in children under 6 years should be closely monitored by a dietitian or clinician.

Directions for use: Ready to drink. Altraplen Protein can be consumed frozen, chilled, at room temperature or gently heated.

- ◆ Shake well before use.

Storage: Altraplen Protein should be stored in a cool, dry place (below 25°C). Once opened consume within 4 hours or store in a refrigerator and consume within 24 hours. Discard unused contents thereafter.

Shelf life: 18 months from date of manufacture. See side of bottle and outer packaging for best before date.

Region of origin: EU.

This product is packaged in a protective atmosphere.

INGREDIENTS:

For all other flavours please see individual packaging. Refer to full data sheet on Nualtra.com.

VANILLA: Water, **Milk** protein concentrate, Maltodextrin, Glucose syrup, Rapeseed oil, Calcium caseinate, Potassium caseinate, Isolated **soya** protein, Emulsifier: **Soya** lecithin (E322), Tripotassium citrate (E332), Trisodium citrate, Calcium chloride (E509), Potassium chloride, Choline chloride, Magnesium citrate, Flavouring, Vitamins: (Ascorbic acid, Vit A acetate, Nicotinamide, D-biotin, Vit D3, Vit B12, Pyridoxine HCl, Vit K, Thiamine mononitrate, Riboflavin, Vit E acetate, Calcium D-pantothenate, Folic acid), Sodium hydroxide (E524), Magnesium oxide (E530), Colour E100, Acesulfame K (E950), Ferric pyrophosphate, Sucralose (E955), Zinc sulphate, Sodium selenite, Manganese sulphate monohydrate, Copper sulphate, Sodium fluoride, Chromium chloride, Sodium molybdate, Potassium iodide..

Average content	Units	100ml	200ml bottle
Energy	KJ Kcal	632 150	1264 300
Fat (33.5 en%)	g	5.6	11.2
of which saturates	g	0.46	0.92
of which monounsaturates	g	3.36	6.72
of which polyunsaturates	g	1.59	3.18
Carbohydrate (40 en%)	g	15	30
of which sugars	g	4.6	9.2
Fibre (0%)	g	0	0
Protein (26.5 en%)	g	10	20
Salt	g	0.19	0.38
VITAMINS			
Vitamin A	µg-RE	120	240
Vitamin D	µg	2.5	5
Vitamin E	mg α-TE	2	4
Vitamin K	µg	10	20
Vitamin C	mg	15	30
Thiamin (B1)	mg	0.25	0.5
Riboflavin (B2)	mg	0.25	0.5
Niacin	mg NE	2.7	5.4
Vitamin B6	mg	0.35	0.7
Folic Acid	µg	55	110
Vitamin B12	µg	0.95	1.9
Biotin	µg	6	12
Pantothenic Acid	mg	1	2
MINERALS			
Sodium	mmol mg	3.3 75	6.6 150
Potassium	mmol mg	4.6 180	9.2 360
Chloride	mmol mg	4.2 150	8.4 300
Calcium	mmol mg	4 160	8 320
Phosphorus	mmol mg	3.2 100	6.4 200
Magnesium	mmol mg	1 25	2 50
Iron	mg	2	4
Zinc	mg	1.5	3
Copper	mg	0.26	0.52
Manganese	mg	0.3	0.6
Selenium	µg	8.5	17
Chromium	µg	10	20
Molybdenum	µg	15	30
Iodine	µg	20	40
Fluoride	mg	0.15	0.3
Osmolarity	mOsmol/L	400	
Osmolality	mOsmol/kg/H ₂ O	520	
Lactose	g	0.09	0.18

Altrapro

Altrapro is a Food for Special Medical Purposes for use under medical supervision.

- ◆ Ready to drink protein supplement with added sweetener.
- ◆ Not suitable as a sole source of nutrition. May be used to supplement a patient's dietary intake.
- ◆ Available in 60ml bottles (15 x 60ml).

Flavours: Available in Berry and Lemon & Lime flavours.

Allergen information: Contains milk protein. Gluten free and lactose free.

Religious/Dietary information: Not suitable for vegans. Suitable for vegetarians. Halal certified.

Indications: For enteral use only. Must be used under medical supervision. May be used for the dietary management of patients with or at risk of developing disease related malnutrition as determined by appropriate nutritional screening.

Contraindications: Not suitable for children under 3 years. Not suitable for patients with Galactosaemia or in patients with cow's milk protein allergy.

Precautions: Not suitable for use in children under 3 years and use of this product in children under 6 years should be closely monitored by a dietitian or clinician.

Directions for use: Ready to drink. Use as directed by a clinician. Altrapro can be consumed chilled or at room temperature.

- ◆ Shake well before use.

Storage (unopened): Store in a cool, dry place, away from direct sunlight.

Storage (opened): Once opened consume within 4 hours or stored in a refrigerator for up to 24 hours. Discard unused contents after 24 hours.

Shelf life: 15 months. See side of bottle and outer packaging for best before date.

Region of origin: EU.

This product is packaged in a protective atmosphere.

INGREDIENTS:

BERRY: Water, Beta-lactoglobulin (MILK) (37%), Acidity Regulators: Citric Acid, Malic Acid, Flavourings, Preservatives: Potassium Sorbate, Sodium Benzoate, Sweetener: Sucralose.

LEMON & LIME: Water, Beta-lactoglobulin (MILK) (37%), Acidity Regulators: Citric Acid, Malic Acid, Flavourings, Preservatives: Potassium Sorbate, Sodium Benzoate, Sweetener: Sucralose.

Average content	Units	100ml	Per 60ml bottle
Energy	KJ Kcal	574 135	344 81
Fat	g	0	0
of which saturates	g	0	0
Carbohydrate	g	0	0
of which sugars	g	0	0
Lactose	g	0	0
Fibre	g	0	0
Protein	g	33	20
Salt	g	0.07	0.04
AMINO ACIDS			
Alanine	g	2.0	1.2
Arginine	g	0.78	0.47
Aspartate	g	3.3	2.0
Cysteine	g	0.85	0.51
Glutamate	g	5.9	3.6
Glycine	g	0.40	0.24
Histidine	g	0.45	0.27
Isoleucine	g	1.8	1.1
Leucine	g	4.6	2.8
Lysine	g	3.5	2.1
Methionine	g	0.97	0.58
Phenylalanine	g	1.1	0.63
Proline	g	1.6	0.97
Serine	g	1.1	0.68
Threonine	g	1.5	0.92
Tryptophan	g	0.62	0.37
Tyrosine	g	1.1	0.66
Valine	g	1.8	1.1
MINERALS			
Sodium	mmol mg	1.15 27	0.69 16
Potassium	mmol mg	0.70 27.6	0.42 16.6
Chloride	mmol mg	1.86 66.0	1.12 39.6
Calcium	mmol mg	0.23 9.53	0.14 5.72
Phosphorus	mmol mg	0.28 8.59	0.17 5.15
Magnesium	mmol mg	0.04 1.04	0.02 0.62
OTHER			
Water Content	ml	62	37
Potential Renal Solute Load	mOsmol/L	1950	
Osmolarity	mOsmol/L	186	
Osmolality	mOsmol/kg H ₂ O	202	

Altrashot

Altrashot is a Food for Special Medical Purposes for use under medical supervision.

- ◆ A low volume, energy dense liquid oral nutritional supplement containing 420kcal and 6g protein in 120ml. One bottle of Altrashot provides 3 x 40ml or 4 x 30ml doses.
- ◆ May be used to supplement a patient's dietary intake. Not suitable as a sole source of nutrition.
- ◆ Available in 4 x 120ml clusters. Starter pack also available including 2 x 120ml bottles.

Flavours: Available in Vanilla, Strawberry and Neutral flavours.

Allergen information: Contains milk protein. Gluten free, lactose free and soya free.

Indications: For enteral use only. Must be used under medical supervision. May be used for the dietary management of patients with or at risk of developing disease related malnutrition as determined by appropriate nutritional screening.

Contraindications: Not suitable for children under 3 years. Not suitable for patients with Galactosaemia or in patients with cow's milk protein allergy.

Precautions: Not suitable for use in children under 3 years and use of this product in children under 6 years should be closely monitored by a dietitian or clinician.

Directions for use: Ready to drink. Altrashot can be consumed frozen, chilled, room temperature or gently heated. Altrashot can be added to food and drink.

- ◆ Shake well before use.

Storage: Altrashot should be stored in a cool, dry place (below 25°C). Once opened consume within 4 hours or store in a refrigerator and consume within 24 hours. Discard unused contents thereafter.

Shelf life: 12 months from date of manufacture. See side of bottle and outer packaging for best before date.

Region of origin: EU.

This product is packaged in a protective atmosphere.

INGREDIENTS:

For all other flavours please see individual packaging. Refer to full data sheet on Nualtra.com.

VANILLA: Water, Glucose syrup, **Milk** proteins, Cream (**milk**), Rapeseed oil, Sugar, Oligofructose, Emulsifier (**soya** lecithin), Modified starch, Flavour, Minerals (Tripotassium citrate, Magnesium citrate, Potassium chloride, Disodium phosphate, Trisodium citrate, Tricalcium citrate, Sodium hydroxide, Ferrous lactate, Zinc sulphate, Sodium selenite, Copper sulphate, Manganese sulphate, Sodium fluoride, Chromium chloride, Sodium molybdate, Potassium iodide), Vitamins (Vitamin C, Niacin, Pantothenic acid, Vitamin E, Thiamin, Vitamin B6, Riboflavin, Vitamin A, Folic acid, Biotin, Vitamin K, Vitamin D, Vitamin B12).

Average content	Units	100ml	120ml bottle	30ml shot	40ml shot
Energy	KJ Kcal	1451 350	1741 420	435 105	580 140
Fat (74.8 en%)	g	29	35	9	12
of which saturates	g	2.25	3	1	1
of which monounsaturates	g	18.4	22	6	7
of which polyunsaturates	g	8.5	10	3	3
Carbohydrate (19.5 en%)	g	17	20.4	5	7
of which sugars	g	7.9	9.5	2	3
Fibre (0%)	g	0	0	0	0
Protein (5.7 en%)	g	5	6	1.5	2
Salt	g	0.30	0.36	0.09	0.12
VITAMINS					
Vitamin A	µg-RE	190	228	57	76
Vitamin D	µg	2.7	3.2	0.8	1.1
Vitamin E	mg α-TE	9	10.8	2.7	3.6
Vitamin K	µg	40	48	12	16
Vitamin C	mg	33	39.6	9.9	13.2
Thiamin (B1)	mg	0.5	0.6	0.2	0.2
Riboflavin (B2)	mg	0.5	0.6	0.2	0.2
Niacin	mg NE	4.5	5.4	1.4	1.8
Vitamin B6	mg	0.6	0.7	0.2	0.2
Folic Acid	µg	90	108	27	36
Vitamin B12	µg	0.5	0.6	0.2	0.2
Biotin	µg	11	13.2	3.3	4.4
Pantothenic Acid	mg	1.5	1.8	0.5	0.6
MINERALS					
Sodium	mmol mg	5.7 120	6.8 144	1.7 36	2.3 48
Potassium	mmol mg	8.9 350	10.7 420	2.7 105	3.6 140
Chloride	mmol mg	4.2 150	5.0 180	1.3 45	1.7 60
Calcium	mmol mg	4 160	4.8 192	1.2 48	1.6 64
Phosphorus	mmol mg	4.8 150	5.8 180	1.4 45	1.9 60
Magnesium	mmol mg	1.6 40	1.9 48	0.5 12	0.6 16
Iron	mg	2.5	3.0	0.8	1.0
Zinc	mg	3.5	4.2	1.1	1.4
Copper	mg	0.3	0.4	0.1	0.1
Manganese	mg	0.5	0.6	0.2	0.2
Selenium	µg	18	21.6	5.4	7.2
Chromium	µg	11	13.2	3.3	4.4
Molybdenum	µg	20	24	6	8
Iodine	µg	40	48	12	16
Fluoride	mg	0	0	0	0
Osmolarity	mOsmol/L	775-790			
Osmolality	mOsmol/kg/H ₂ O	1445-1490			
Lactose	g	0.20	0.24	0.06	0.08

Altrini Compact Fibre is a nutritionally complete Food for Special Medical Purposes for use under medical supervision.

- ◆ A ready to drink milkshake style oral nutritional supplement for 1 -10yrs olds containing 300kcal and 7.5g protein.
- ◆ For the dietary management of children at risk of or with disease related malnutrition. May be used as a sole source of nutrition.
- ◆ Available in 4 x 125ml clusters. Starter pack also available including 2 x 125ml bottles.

Flavours: Available in Vanilla and Strawberry flavours.

Allergen information: Contains milk (protein and lactose) and soya. Gluten free.

Indications: For enteral use only. Must be used under medical supervision. For the dietary management of disease related malnutrition in children aged 1-10 years.

Contraindications: Not suitable for children under 1 year. Not suitable for patients with galactosaemia or in patients with cow's milk allergy.

Precautions: Not suitable for use in children under 1 year.

Directions for use: Ready to drink. Altrini Compact Fibre can be consumed frozen, chilled, at room temperature or gently heated.

- ◆ Shake well before use.

Storage: Altrini Compact Fibre should be stored in a cool, dry place. Once opened can be stored in a refrigerator for up to 24 hours. Discard unused contents thereafter.

Shelf life: 9 months from date of manufacture. See individual bottle and outer packaging for best before date.

Region of origin: EU.

This product is packaged in a protective atmosphere.

INGREDIENTS:

For all other flavours please see individual packaging. Refer to full data sheet on Nualtra.com.

VANILLA: Water, Glucose syrup, **Milk** proteins, Cream (**milk**), Rapeseed oil, Sugar, Oligofructose, Emulsifier (**soya** lecithin), Modified starch, Flavour, Minerals (Tri potassium citrate, Magnesium citrate, Potassium Chloride, Disodium phosphate, Trisodium citrate, Tricalcium citrate, Sodium hydroxide, Ferrous lactate, Zinc sulphate, Sodium selenite, Copper sulphate, Manganese sulphate, Sodium fluoride, Chromium chloride, Sodium molybdate, Potassium iodide), Vitamins (Vitamin C, Niacin, Pantothenic acid, Vitamin E, Thiamin, Vitamin B6, Riboflavin, Vitamin A, Folic acid, Biotin, Vitamin K, Vitamin D, Vitamin B12)

Average content	Units	100ml	Per 125ml bottle
Energy	KJ Kcal	1008 240	1260 300
Fat (30 en%)	g	8	10
of which saturates	g	1.9	2.4
of which monounsaturates	g	3.7	4.6
of which polyunsaturates	g	1.3	1.6
Carbohydrate (59 en%)	g	35.2	44
of which sugars	g	7.5	9.4
Fibre (1 en%)	g	1.4	1.75
Protein (10 en%)	g	6	7.5
Salt	g	0.25	0.31
VITAMINS			
Vitamin A	µg-RE	115.0	143.8
Vitamin D	µg	2.0	2.5
Vitamin E	mg α-TE	2.0	2.5
Vitamin K	µg	12	15
Vitamin C	mg	26	32.5
Thiamin (B1)	mg	0.44	0.55
Riboflavin (B2)	mg	0.40	0.50
Niacin	mg NE	3.6	4.5
Vitamin B6	mg	0.4	0.5
Folic Acid	µg	60	75
Vitamin B12	µg	0.75	0.94
Biotin	µg	8.5	10.6
Pantothenic Acid	mg	1.10	1.38
MINERALS			
Sodium	mmol mg	4.4 101	5.5 126.3
Potassium	mmol mg	6.1 240	7.7 300
Chloride	mmol mg	3.0 105	3.7 131.3
Calcium	mmol mg	4.5 180	5.6 225
Phosphorus	mmol mg	4.2 130	5.2 162.5
Magnesium	mmol mg	1.2 30	1.5 37.5
Iron	mg	2.1	2.6
Zinc	mg	2	2.5
Copper	µg	200	250
Manganese	mg	0.2	0.25
Selenium	µg	10	12.5
Chromium	µg	9	11.25
Molybdenum	µg	12.0	15.0
Iodine	µg	30	37.5
Fluoride	mg	0.15	0.19
Osmolarity	mOsmol/L	770	
Osmolality	mOsmol/kg/H ₂ O	896	
Lactose	g	0.6	0.8
Potential Renal Solute Load	mOsmol/L	520	

Foodlink Complete

Foodlink Complete is a Food for Special Medical Purposes for use under medical supervision.

- ◆ A powdered milkshake style oral nutritional supplement.
- ◆ To be used to supplement a patient's dietary intake. Not suitable as a sole source of nutrition.
- ◆ Available in 7 x 57g cartons or 1596g tub. Starter pack also available including 5 x 57g sachets and a Nualtra shaker.

Flavours: Available in Vanilla, Strawberry, Chocolate, Banana and Natural flavours.

Allergen information: Contains milk (protein and lactose) and soya. Gluten free.

Indications: For enteral use only. Must be used under medical supervision. May be used for the dietary management of patients with or at risk of developing disease related malnutrition as determined by appropriate nutritional screening.

Contraindications: Not suitable for children under 3 years. Not suitable for patients with Galactosaemia or in patients with cow's milk intolerance or allergy.

Precautions: Not suitable for use in children under 3 years and use of this product in children under 6 years should be closely monitored by a dietitian or clinician.

Storage: Foodlink Complete should be stored in a cool, dry place. Once reconstituted Foodlink Complete can be stored in a refrigerator for up to 24 hours. Discard unused contents thereafter.

Shelf life: 24 months from date of manufacture. See individual sachet and outer packaging for best before date.

Region of origin: EU.

This product is packaged in a protective atmosphere.

Directions for use:

- ◆ Add 200ml of whole milk* to the shaker or glass and 1 x 57g sachet of Foodlink Complete.
- ◆ Whisk or mix well with a fork. Serve when fully mixed.
- ◆ Alternatively, if using a Nualtra shaker – Add 200ml liquid to the shaker along with 1 x 57g sachet of Foodlink Complete.
- ◆ Close lid and shake vigorously until powder the is dissolved.
- ◆ Foodlink Complete can be consumed chilled, at room temperature or gently heated.

*Foodlink Complete can also be mixed with semi-skimmed or skimmed milk, fruit juices or water.

If making Foodlink Complete using alternative liquids, please note that the nutritional profile will vary.

INGREDIENTS:

For all other flavours please see individual packaging. Refer to full data sheet on Nualtra.com.

STRAWBERRY: Fat filled **milk** powder (Skim **milk** solids, Refined palm oil, Sugar, **Soya** lecithin, Vitamin A, Vitamin D3) Skimmed **milk** powder, Maltodextrin, Caster sugar, Natural colour (Beetroot powder), Flavoursings, Vitamin and mineral blend (Magnesium oxide, Ascorbic acid, Ferric pyrophosphate, DL- α -tocopherol acetate (Vitamin E), Nicotinamide, Phytomenadione (Vitamin K1), Zinc oxide, Copper gluconate, Calcium D-pantothenate, Retinyl acetate (Vitamin A), Manganese Sulphate, Pyridoxine hydrochloride, Thiamine mononitrate, D-biotin, Vitamin D3, Riboflavin, Folic Acid, Potassium iodide, Sodium selenite, Chromium chloride).

Average content	Units	Per 100g powder	Per shake - 57g powder mixed with 200ml whole milk
Energy	KJ Kcal	1869 444	1611 383
Fat (37.5 en%*)	g	15	16
of which saturates	g	7.4	8.9
of which monounsaturates	g	5.4	5.2
of which polyunsaturates	g	1.3	0.9
Carbohydrate (42.7 en%*)	g	56	41
of which sugars	g	43	34
Fibre (0 en%*)	g	0	0
Protein (19.8 en%*)	g	21	19
Salt	g	0.62	0.57
VITAMINS			
Vitamin A	µg-RE	666	454
Vitamin D	µg	8.8	5.0
Vitamin E	mg α-TE	8.6	5.0
Vitamin K	µg	52	30
Vitamin C	mg	61	39
Thiamin (B1)	mg	1.4	0.86
Riboflavin (B2)	mg	1.8	1.5
Niacin	mg NE	11	6.7
Vitamin B6	mg	2.0	1.3
Folic Acid	µg	201	124
Vitamin B12	µg	2.4	3.3
Biotin	µg	30	22
Pantothenic Acid	mg	5.8	4.5
MINERALS			
Sodium	mmol mg	11 250	10 230
Potassium	mmol mg	23.1 905	21.4 839
Chloride	mmol mg	17.5 620	15.1 536
Calcium	mmol mg	18.5 743	16.7 671
Phosphorus	mmol mg	16.7 518	15.9 493
Magnesium	mmol mg	4.24 103	3.36 81.7
Iron	mg	6.8	3.9
Zinc	mg	5.5	4.1
Copper	mg	0.50	0.29
Manganese	mg	0.60	0.34
Selenium	µg	26	17
Chromium	µg	7.0	4.0
Molybdenum	µg	24	14
Iodine	µg	116	130
Fluoride	mg	0.0	0.0
Osmolarity	mOsm/L		619
Osmolality	mOsmol/kg/H ₂ O		900-1150
Lactose	g	32.6	28

*when mixed with 200ml whole milk

Foodlink Complete Compact is a Food for Special Medical Purposes for use under medical supervision.

- ◆ A powdered milkshake style oral nutritional supplement.
- ◆ To be used to supplement a patient's dietary intake. Not suitable as a sole source of nutrition.
- ◆ Available in 7 x 57g cartons. Starter pack also available including 5 x 57g sachets and a Nualtra shaker.

Flavours: Available in Vanilla, Strawberry, Chocolate, Banana and Natural flavours.

Allergen information: Contains milk (protein and lactose) and soya. Gluten free.

Indications: For enteral use only. Must be used under medical supervision. May be used for the dietary management of patients with or at risk of developing disease related malnutrition as determined by appropriate nutritional screening.

Contraindications: Not suitable for children under 3 years. Not suitable for patients with Galactosaemia or in patients with cow's milk intolerance or allergy.

Precautions: Not suitable for use in children under 3 years and use of this product in children

under 6 years should be closely monitored by a dietitian or clinician.

Storage: Foodlink Complete Compact should be stored in a cool, dry place. Once reconstituted Foodlink Complete Compact can be stored in a refrigerator for up to 24 hours. Discard unused contents thereafter.

Shelf life: 24 months from date of manufacture. See individual sachet and outer packaging for best before date.

Region of origin: EU.

This product is packaged in a protective atmosphere.

Directions for use:

- ◆ Add 100ml of whole milk* to the shaker or glass and 1 x 57g sachet of Foodlink Complete Compact.
- ◆ Whisk or mix well with a fork. Serve when fully mixed.
- ◆ Alternatively, if using a Nualtra shaker – Add 100ml liquid to the shaker along with 1 x 57g sachet of Foodlink Complete Compact.
- ◆ Close lid and shake vigorously until powder the is dissolved.
- ◆ Foodlink Complete Compact can be consumed chilled, at room temperature or gently heated.

*Foodlink Complete Compact can also be mixed with semi-skimmed or skimmed milk, fruit juices or water. If making Foodlink Complete Compact using alternative liquids, please note that the nutritional profile will vary.

INGREDIENTS:

For all other flavours please see individual packaging. Refer to full data sheet on Nualtra.com.

STRAWBERRY: Fat filled **milk** powder (Skim **milk** solids, Refined palm oil, Sugar, **Soya** lecithin, Vitamin A, Vitamin D3) Skimmed **milk** powder, Maltodextrin, Caster sugar, Natural colour (Beetroot powder), Flavours, Vitamin and mineral blend (Magnesium oxide, Ascorbic acid, Ferric pyrophosphate, DL- α -tocopherol acetate (Vitamin E), Nicotinamide, Phytomenadione (Vitamin K1), Zinc oxide, Copper gluconate, Calcium D-pantothenate, Retinyl acetate (Vitamin A), Manganese sulphate, Pyridoxine hydrochloride, Thiamine mononitrate, D-biotin, Vitamin D3, Riboflavin, Folic acid, Potassium iodide, Sodium selenite, Chromium chloride).

Average content	Units	Per 100g powder	Per shake - 57g powder mixed with 100ml whole milk
Energy	KJ Kcal	1869 444	1338 318
Fat (34 en%*)	g	15	12
of which saturates	g	7.4	6.6
of which monounsaturates	g	5.4	4.1
of which polyunsaturates	g	1.3	0.8
Carbohydrate (47 en%*)	g	56	37
of which sugars	g	43	29
Fibre (0 en%*)	g	0	0
Protein (19 en%*)	g	21	15
Salt	g	0.62	0.46
VITAMINS			
Vitamin A	µg-RE	666	417
Vitamin D	µg	8.8	5.0
Vitamin E	mg α-TE	8.6	5.0
Vitamin K	µg	52	30
Vitamin C	mg	61	37
Thiamin (B1)	mg	1.4	0.83
Riboflavin (B2)	mg	1.8	1.3
Niacin	mg NE	11	6.5
Vitamin B6	mg	2.0	1.2
Folic Acid	µg	201	119
Vitamin B12	µg	2.4	2.3
Biotin	µg	30	20
Pantothenic Acid	mg	5.8	3.9
MINERALS			
Sodium	mmol mg	11.0 250	8.2 186
Potassium	mmol mg	23.1 905	17.3 677
Chloride	mmol mg	17.5 620	12.6 445
Calcium	mmol mg	18.5 743	13.6 547
Phosphorus	mmol mg	16.7 518	12.7 394
Magnesium	mmol mg	4.24 103	2.89 70.2
Iron	mg	6.8	3.9
Zinc	mg	5.5	3.6
Copper	mg	0.50	0.29
Manganese	mg	0.60	0.34
Selenium	µg	26	16
Chromium	µg	7.0	4.0
Molybdenum	µg	24	14
Iodine	µg	116	98
Fluoride	mg	0	0
Osmolarity	mOsm/L		1190
Osmolality	mOsmol/kg/H ₂ O		1783
Lactose	g	32.6	23.6

*when mixed with 100ml whole milk

Foodlink Complete

WITH FIBRE

Foodlink Complete with Fibre is a Food for Special Medical Purposes for use under medical supervision.

- ◆ A powdered milkshake style oral nutritional supplement with fibre.
- ◆ To be used to supplement a patient's dietary intake. Not suitable as a sole source of nutrition.
- ◆ Available in 7 x 63g cartons. Starter pack also available including 5 x 63g sachets and a Nualtra shaker.

Flavours: Available in Vanilla, Strawberry, Chocolate, Banana and Natural flavours.

Allergen information: Contains milk (protein and lactose) and soya. Gluten free.

Indications: For enteral use only. Must be used under medical supervision. May be used for the dietary management of patients with or at risk of developing disease related malnutrition as determined by appropriate nutritional screening.

Contraindications: Not suitable for children under 3 years. Not suitable for patients with Galactosaemia or in patients with cow's milk intolerance or allergy.

Precautions: Not suitable for use in children under 3 years and use of this product in children under 6 years should be closely monitored by a dietitian or clinician.

Storage: Foodlink Complete with Fibre should be stored in a cool, dry place. Once reconstituted Foodlink Complete with Fibre can be stored in a refrigerator for up to 24 hours. Discard unused contents thereafter.

Shelf life: 24 months from date of manufacture. See individual sachet and outer packaging for best before date.

Region of origin: EU.

This product is packaged in a protective atmosphere.

Directions for use:

- ◆ Add 200ml of whole milk* to the shaker or glass and 1 x 63g sachet of Foodlink Complete Fibre.
- ◆ Whisk or mix well with a fork. Serve when fully mixed.
- ◆ Alternatively, if using a Nualtra shaker – Add 200ml liquid to the shaker along with 1 x 63g sachet of Foodlink Complete Fibre.
- ◆ Close lid and shake vigorously until powder is dissolved.
- ◆ Foodlink Complete with Fibre can be consumed chilled, at room temperature or gently heated.

*Foodlink Complete with Fibre can also be mixed with semi-skimmed or skimmed milk, fruit juices or water. If making Foodlink Complete with Fibre using alternative liquids, please note that the nutritional profile will vary.

INGREDIENTS:

For all other flavours please see individual packaging. Refer to full data sheet on Nualtra.com.

STRAWBERRY: Fat filled **milk** powder (Skim **milk** solids, Refined palm oil, Sugar, **Soya** lecithin, Vitamin A, Vitamin D3) Skimmed **milk** powder, Maltodextrin, Inulin, Caster sugar, Natural colour (Beetroot powder), Flavourings, Vitamin and mineral blend (Magnesium oxide, Ascorbic acid, Ferric pyrophosphate, DL- α -tocopherol acetate (Vitamin E), Nicotinamide, Phytomenadione (Vitamin K1), Zinc oxide, Copper gluconate, Calcium D-pantothenate, Retinyl acetate (Vitamin A), Manganese sulphate, Pyridoxine hydrochloride, Thiamine mononitrate, D-biotin, Vitamin D3, Riboflavin, Folic acid, Potassium iodide, Sodium selenite, Chromium chloride).

Average content	Units	Per 100g powder	Per shake - 63g powder mixed with 200ml whole milk
Energy	KJ Kcal	1779 423	1667 397
Fat (36.3 en%*)	g	14	16
of which saturates	g	6.7	9.0
of which monounsaturates	g	4.9	5.2
of which polyunsaturates	g	1.2	0.9
Carbohydrate (42.3 en%*)	g	52	42
of which sugars	g	40	35
Fibre (2.3 en%*)	g	7.2	4.5
Protein (19.1 en%*)	g	19	19
Salt	g	0.57	0.57
VITAMINS			
Vitamin A	µg-RE	642	478
Vitamin D	µg	8.3	5.2
Vitamin E	mg α-TE	8.7	5.6
Vitamin K	µg	54	34
Vitamin C	mg	63	44
Thiamin (B1)	mg	1.4	0.94
Riboflavin (B2)	mg	1.7	1.5
Niacin	mg NE	12	8
Vitamin B6	mg	2.1	1.4
Folic Acid	µg	209	141
Vitamin B12	µg	2.2	3.3
Biotin	µg	29	23
Pantothenic Acid	mg	5.7	4.8
MINERALS			
Sodium	mmol mg	10 230	10 230
Potassium	mmol mg	21.1 825	21.6 843
Chloride	mmol mg	15.9 565	15.2 539
Calcium	mmol mg	16.9 677	16.8 674
Phosphorus	mmol mg	15.2 472	16.0 495
Magnesium	mmol mg	4.07 98.8	3.51 85.2
Iron	mg	7.1	4.5
Zinc	mg	5.5	4.5
Copper	mg	0.52	0.33
Manganese	mg	0.62	0.39
Selenium	µg	26	18
Chromium	µg	6.9	4.3
Molybdenum	µg	22	14
Iodine	µg	120	140
Fluoride	mg	0.0	0.0
Osmolarity	mOsm/L		679
Osmolality	mOsmol/kg/H ₂ O		900-1150
Lactose	g	32.3	30

*when mixed with 200ml whole milk

Foodlink

EXTRA

Foodlink Extra is a Food for Special Medical Purposes for use under medical supervision.

- ◆ A powdered milkshake style oral nutritional supplement.
- ◆ To be used to supplement a patient's dietary intake. Not suitable as a sole source of nutrition.
- ◆ Available in 7 x 85g cartons. Starter pack also available including 4 x 85g sachets and a Nualtra shaker.

Flavours: Available in Vanilla, Strawberry, Chocolate, Banana flavours.

Allergen information: Contains milk protein, lactose. Gluten free.

Indications: For enteral use only. Must be used under medical supervision. May be used for the dietary management of disease related malnutrition as determined by appropriate nutritional screening.

Contraindications: Not suitable for children under 3 years.

Precautions: Use of this product in children under 6 years should be closely monitored by a

dietitian or clinician.

Storage: Foodlink Extra should be stored in a cool, dry place. Once reconstituted Foodlink Extra can be stored in a refrigerator for up to 24 hours. Discard unused contents thereafter.

Shelf life: 24 months from date of manufacture. See individual sachet and outer packaging for best before date.

Region of origin: EU.

This product is packaged in a protective atmosphere.

Foodlink Extra can be consumed chilled or at room temperature.

Directions for use if using a Nualtra shaker:

- ◆ Add 240ml whole milk to the shaker and one sachet of Foodlink Extra.
- ◆ Replace the lid and shake vigorously for 20-30 seconds.
- ◆ Decant the mixture into a suitable vessel for drinking or storing in the refrigerator.

Directions for use if using a large glass or mug:

- ◆ Add 100ml whole milk to the glass or mug and one sachet of Foodlink Extra.
- ◆ Mix into a smooth paste with a fork or whisk.
- ◆ Top up with the remaining 140ml whole milk whilst continuing to mix.
- ◆ Serve when fully mixed.

INGREDIENTS:

For all other flavours please see individual packaging. Refer to full data sheet on Nualtra.com.

STRAWBERRY: Vegetable Oil Powder (Rapeseed Oil, Glucose Syrup Solids, **Milk** Protein (Lactose), Emulsifier (E471), Stabiliser (E340), Antioxidants (E304, E306, E307), Anti-caking agent (E551)), Dried Glucose Powder, Skimmed **Milk** Powder, Maltodextrin, Caster Sugar, Natural Colour (Beetroot Powder), Flavoursings, Mineral Premix (Calcium Carbonate, Magnesium Oxide, Ferric Pyrophosphate, Potassium Iodide, Copper Gluconate, Zinc Oxide, Manganese Sulphate, Sodium Molybdate, Sodium Selenite, Chromium Chloride), Salt and Vitamin Premix (Ascorbic Acid, Nicotinamide (Vitamin B3), Retinyl Acetate (Vitamin A), Calcium Pantothenate (Vitamin B5), DL- α -Tocopherol Acetate (Vitamin E), Cholecalciferol (Vitamin D3), Pyridoxine Hydrochloride (Vitamin B6), Thiamine Mononitrate (Vitamin B1), Riboflavin (Vitamin B2), Folic Acid, Phytomenadione (Vitamin K), Cyanocobalamin (Vitamin B12) and D-Biotin).

Average content	Units	Per 100g powder	Per shake - 85g powder mixed with 240ml whole milk
Energy	KJ Kcal	2186 523	2513 601
Fat (50 ¹ / 51 ² en%)	g	30	35
of which saturates	g	3.4	8.7
of which monounsaturates	g	18	18
of which polyunsaturates	g	7.8	6.9
Carbohydrate (45 ¹ / 41 ² en%)	g	60	62
of which sugars	g	15	24
Fibre (0 ^{1,2} en%)	g	0	0
Protein (4 ¹ / 9 ² en%)	g	4.9	13
Salt	g	0.4	0.6
VITAMINS			
Vitamin A	µg-RE	616	646
Vitamin D	µg	10	8.5
Vitamin E	mg α-TE	10	8.6
Vitamin K	µg	58	49
Vitamin C	mg	59	55
Thiamin (B1)	mg	1.3	1.2
Riboflavin (B2)	mg	1.0	1.4
Niacin	mg NE	13.3	11.0
Vitamin B6	mg	1.9	1.7
Folic Acid	µg	202	191
Vitamin B12	µg	1.1	3.1
Biotin	µg	34	35
Pantothenic Acid	mg	4.7	5.4
MINERALS			
Sodium	mmol mg	7.0 162	10.4 241
Potassium	mmol mg	21.8 853	28.5 1114
Chloride	mmol mg	9.8 349	14.6 518
Calcium	mmol mg	4.5 181	11.2 452
Phosphorus	mmol mg	11.9 369	17.8 552
Magnesium	mmol mg	2.2 53	2.9 71
Iron	mg	7.4	6.4
Zinc	mg	3.8	4.4
Copper	mg	583	496
Manganese	mg	0.67	0.57
Selenium	µg	16.0	16.4
Chromium	µg	7.7	6.5
Molybdenum	µg	18.0	15.0
Iodine	µg	116	176
Fluoride	mg	0	0
Osmolarity	mOsm/L		947
Osmolality	mOsmol/kg/H ₂ O		1280
Potential Renal Solute Load	mOsm/L		587
Lactose	g	4.9	15.6

Foodlink Smoothie is a Food for Special Medical Purposes for use under medical supervision.

- ◆ A powdered smoothie style oral nutritional supplement.
- ◆ To be used to supplement a patient's dietary intake. Not suitable as a sole source of nutrition.
- ◆ Available in 7 x 66g cartons. Starter pack also available including 4 x 66g sachets and a Nualtra shaker.

Flavours: Available in Orange & Mango, Red Berry, Peach, Tropical flavours.

Allergen information: Contains soya. Gluten free, milk protein free, lactose free.

Indications: For enteral use only. Must be used under medical supervision. May be used for the dietary management of disease related malnutrition as determined by appropriate nutritional screening.

Contraindications: Not suitable for children under 3 years.

Precautions: Use of this product in children under 6 years should be closely monitored by a

dietitian or clinician.

Storage: Foodlink Smoothie should be stored in a cool, dry place. Once reconstituted Foodlink Smoothie can be stored in a refrigerator for up to 24 hours. Discard unused contents thereafter.

Shelf life: 24 months from date of manufacture. See individual sachet and outer packaging for best before date.

Region of origin: EU.

This product is packaged in a protective atmosphere.

Foodlink Smoothie can be consumed chilled or at room temperature.

Directions for use if using a Nualtra shaker:

- ◆ Add 150ml water to the shaker and one sachet of Foodlink Smoothie.
- ◆ Replace the lid and shake vigorously for 20-30 seconds.
- ◆ Decant the mixture into a suitable vessel for drinking or storing in the refrigerator.

Directions for use if using a large glass or mug:

- ◆ Add 50ml water to the glass or mug and one sachet of Foodlink Smoothie.
- ◆ Mix into a smooth paste with a fork or whisk.
- ◆ Top up with the remaining 100ml water whilst continuing to mix.
- ◆ Serve when fully mixed.

INGREDIENTS:

For all other flavours please see individual packaging. Refer to full data sheet on Nualtra.com.

ORANGE & MANGO: Dried Glucose Powder, Sunflower Oil Powder (Refined Sunflower Oil, Acacia Fibres, Sunflower Lecithin, Ascorbyl-Palmitate, DL-alpha-tocopherol), Sugar, **Soy** Protein Isolate, Maltodextrin, Flavourings, Potassium Chloride, Xanthan Gum, Natural Colour (Beta Carotene), Mineral Blend (Calcium Carbonate, Magnesium Oxide, Ferric Pyrophosphate, Potassium Iodide, Copper Gluconate, Zinc Oxide, Manganese Sulphate and Sodium Selenite) and Vitamin Blend (Ascorbic Acid, Nicotinamide (Vitamin B3), DL-a-Tocopherol Acetate (Vitamin E), Calcium Pantothenate (Vitamin B5), Cholecalciferol (Vitamin D), Pyridoxine Hydrochloride (Vitamin B6), Thiamine Mononitrate (Vitamin B1), Retinyl Acetate (Vitamin A), Riboflavin (Vitamin B2), Phytomenadione (Vitamin K), Folic Acid, Cyanocobalamin (Vitamin B12) and D-Biotin)

Average content	Units	Per 100g powder	Per shake - 66g powder mixed with 150ml water
Energy	KJ Kcal	1921 456	1268 301
Fat (28 en%) ¹	g	14.4	9.5
of which saturates	g	2.2	1.5
of which monounsaturates	g	4.2	2.8
of which polyunsaturates	g	7.1	4.7
Carbohydrate (58 en%) ¹	g	66	44
of which sugars	g	31	20
Fibre (0 en%) ¹	g	0	0
Protein (14 en%) ¹	g	15.8	10.4
Salt	g	0.45	0.30
VITAMINS			
Vitamin A	µg-RE	531	350
Vitamin D	µg	8.8	5.8
Vitamin E	mg α-TE	8.8	5.8
Vitamin K	µg	53	35
Vitamin C	mg	53	35
Thiamin (B1)	mg	1.2	0.8
Riboflavin (B2)	mg	0.82	0.54
Niacin	mg NE	12	8
Vitamin B6	mg	1.7	1.1
Folic Acid	µg	217	143
Vitamin B12	µg	0.8	0.5
Biotin	µg	27	18
Pantothenic Acid	mg	4	3
MINERALS			
Sodium	mmol mg	7.7 178	5.0 117
Potassium	mmol mg	13.9 545	9.2 360
Chloride	mmol mg	10.9 389	7.2 257
Calcium	mmol mg	4.4 177	2.9 117
Phosphorus	mmol mg	4.6 143	3.0 94
Magnesium	mmol mg	2.1 53	1.4 35
Iron	mg	9.1	6
Zinc	mg	3.6	2
Copper	mg	790	521
Manganese	mg	0.8	0.5
Selenium	µg	14	9
Chromium	µg	7	4
Molybdenum	µg	30	20
Iodine	µg	116	77
Fluoride	mg	0	0
Osmolarity	mOsm/L		650
Osmolality	mOsmol/kg/H ₂ O		735
Potential Renal Solute Load	mOsm/L		490
Lactose	g	0	0

¹ When reconstituted with 150ml water

Nutricrem

Nutricrem is a Food for Special Medical Purposes for use under medical supervision.

- ◆ A ready to eat, semi solid oral nutritional supplement containing 225kcal and 12.5g protein in 125g.
- ◆ May be used as a sole source of nutrition or used to supplement a patient's dietary intake.
- ◆ Available in 4 x 125g packs. Starter pack also available including 4 x 125g pots.

Flavours: Available in Vanilla, Strawberry, Chocolate Orange and Mint Chocolate flavours.

Allergen information: Contains milk protein and soya. Gluten free and lactose free.

Indications: For enteral use only. Must be used under medical supervision. May be used for the dietary management of patients with or at risk of disease related malnutrition as determined by appropriate nutritional screening.

Contraindications: Not suitable for children under 3 years. Not suitable for patients with Galactosaemia or in patients with cow's milk protein allergy.

Precautions: Not suitable for use in children under 3 years and use of this product in children under 6 years should be closely monitored by a dietitian or clinician.

Directions for use: Ready to eat. Nutricrem can be consumed frozen, chilled, room temperature or gently heated.

- ◆ Stir well before use.

Storage: Nutricrem should be stored in a cool, dry place (below 25°C). Once opened consume within 4 hours or store in a refrigerator and consume within 24 hours. Discard unused contents thereafter.

Shelf life: 12 months from date of manufacture. See top of pot and outer packaging for best before date.

Region of origin: EU.

This product is packaged in a protective atmosphere.

INGREDIENTS:

For all other flavours please see individual packaging. Refer to full data sheet on Nualtra.com.

VANILLA: Milk protein concentrate, Water, Maltodextrin, Sucrose, Rapeseed oil, Calcium caseinate (**Milk**), Potassium caseinate (**Milk**), Starch (E1442), Emulsifier: Mono and diglycerides of fatty acids (E471), Isolated **soya** protein, Tripotassium citrate (E332), Trisodium citrate, Stabiliser: Carrageenan (E407), Flavouring, Magnesium chloride (E511), Potassium dihydrogen phosphate (E340), Magnesium citrate, Colour: Natural Carotene. Vitamins: (Ascorbic acid, Vitamin A acetate, Nicotinamide, D-biotin, Vitamin D3, Vitamin B12, Pyridoxine HCl, Vitamin K, Thiamine mononitrate, Riboflavin, Vitamin E acetate, Calcium D-pantothenate, Folic acid), Sodium chloride, Potassium chloride, Acidity regulator: Potassium hydroxide (E525), Sodium hydroxide (E524), Ferric pyrophosphate, Zinc sulphate, Copper gluconate, Sodium selenite, Manganese sulphate monohydrate, Sodium fluoride, Chromium chloride, Sodium molybdate, Potassium iodide

Average content	Units	100g	125g pot
Energy	KJ Kcal	756 180	945 225
Fat (36 en%)	g	7.2	9
of which saturates	g	1.3	1.6
of which monounsaturates	g	4	5
of which polyunsaturates	g	1.9	2.4
Carbohydrate (41.8 en%)	g	18.8	23.5
of which sugars	g	9.7	12.1
Fibre (0%)	g	0	0
Protein (22.2 en%)	g	10	12.5
Salt	g	0.19	0.23
VITAMINS			
Vitamin A	µg-RE	150	188
Vitamin D	µg	2.48	3.1
Vitamin E	mg α-TE	3.2	4
Vitamin K	µg	16	20
Vitamin C	mg	18	22.5
Thiamin (B1)	mg	0.3	0.4
Riboflavin (B2)	mg	0.6	0.75
Niacin	mg NE	3.7	4.6
Vitamin B6	mg	0.4	0.5
Folic Acid	µg	62	77.5
Vitamin B12	µg	0.74	0.9
Biotin	µg	7.2	9
Pantothenic Acid	mg	1.2	1.5
MINERALS			
Sodium	mmol mg	3.2 74	4 92.5
Potassium	mmol mg	4.6-5.4 180-210*	5.75-7.18 225-262*
Chloride	mmol mg	2.5 88	3.1 110
Calcium	mmol mg	4 160	5 200
Phosphorus	mmol mg	4.4 135	5.5 169
Magnesium	mmol mg	1.1 26	1.4 32.5
Iron	mg	2.5	3.1
Zinc	mg	2	2.5
Copper	mg	0.36	0.45
Manganese	mg	0.5	0.6
Selenium	µg	12	15
Chromium	µg	10.4	13
Molybdenum	µg	16	20
Iodine	µg	24	30
Fluoride	mg	0.2	0.25
Lactose	g	0.23	0.29

* Vanilla and Strawberry = 4.6mg/180mmol per 100g | 5.75mg/225mmol per 125g pot
 Chocolate Orange and Mint Chocolate = 5.4mg/210mmol/100g | 7.18mg/262mmol per 125g pot

Swalloweze

CLEAR

Swalloweze Clear is an instant food and fluid thickener. Food for Special Medical Purposes for the dietary management of dysphagia.

- ◆ Available in a 165g tub or 48 x 1.9g sachets.
- ◆ Swalloweze Clear is gluten free and lactose free and is Halal and Kosher certified.

Uses: Can be used for the dietary management of patients with dysphagia.

Indications: ACBS and GMS approved. For enteral use only.

Contraindications: Not suitable for children under 3 years.

Precautions: Swalloweze Clear must be used under medical supervision and should only be used as a food and fluid thickener.

Storage and directions for use:

Swalloweze Clear should be stored in a cool dry place. Once opened, consume within 2 months.

Shelf life: 24 months. See side of tub and outer packaging for best before date.

IDDSI Guidelines directions for use:

Level 1: 1 x 1.9g scoop*/sachet per 200ml liquid

Level 2: 2 x 1.9g scoops*/sachets per 200ml liquid

Level 3: 3 x 1.9g scoops*/sachets per 200ml liquid

Level 4: 7 x 1.9g scoops*/sachets per 200ml liquid

*levelled scoops

This product is packaged in a protective atmosphere.

Region of origin: EU.

INGREDIENTS: Maltodextrin, Xanthan Gum (E415), Erythritol (E968)

Average content	Units	Per 100g	Per 1.9g scoop/sachet
Energy	KJ Kcal	1119 286	21 5.4
Fat	g	0	0
of which saturates	g	0	0
of which monounsaturates	g	0	0
of which polyunsaturates	g	0	0
Carbohydrate	g	57	1
of which sugars	g	0	0
Fibre	g	29	0.6
Protein	g	1	0.0
Salt	g	23	0.06
MINERALS			
Sodium	mmol mg	52 1200	0.99 22.8
Potassium	mmol mg	2.84 111	0.05 2.1
Calcium	mmol mg	0.3 11	0.01 0.2
Phosphorus	mmol mg	0.7 21	0.01 0.40
Magnesium	mmol mg	0.94 23	0.02 0.44
Iron	mg	0.8	0.02
Zinc	mg	0.5	0.01

Nutritionally complete volumes tables

United Kingdom

Adult Products	Females 19-50 yrs	Males 19-50 yrs	Females 50+ yrs	Males 50+ yrs
Altraplen Compact (ml)	500	565	500	565
No. of Bottles	4	4½	4	4½
Altraplen Compact Daily (ml)	500	500	500	500
No. of Tetra Cartons	2	2	2	2
Altraplen Energy (ml)	800	1000	800	1000
No. of Tetra Cartons	4	5	4	5
Altraplen Protein (ml)	800	900	700	900
No. of Bottles	4	4½	3½	4½
Nutricrem (g)	625	625	625	625
No. of Pots	5	5	5	5
Foodlink Complete	Not suitable for sole source of nutrition			
Foodlink Complete Compact	Not suitable for sole source of nutrition			
Foodlink Complete with Fibre	Not suitable for sole source of nutrition			
Foodlink Extra	Not suitable for sole source of nutrition			
Foodlink Smoothie	Not suitable for sole source of nutrition			
Altrajuce	Not suitable for sole source of nutrition			
Altrapro	Not suitable for sole source of nutrition			
Altrashot	Not suitable for sole source of nutrition			
Nutritionally complete volumes based on UK Dietary Reference Values for Food Energy and Nutrients for the United Kingdom, Department of Health 1991 (excluding electrolytes and magnesium).				

Paediatric Products	Children 1-3 yrs	Children 4-6 yrs	Children 7-10 yrs
Altrini Compact Fibre (ml)	500	700	800
No. of Bottles	4 x 125ml	5.6 x 125ml	6.4 x 125ml
Nutritionally complete volumes to meet EAR for energy and RNI for protein in children aged 1-10 years, excluding electrolytes			

Nutritionally complete volumes tables

Product	Females 19-50 yrs	Males 19-50 yrs	Females 50+ yrs	Males 50+ yrs
Altraplen Compact (ml)	500	500	500	500
No. of Bottles	4	4	4	4
Altraplen Compact Daily (ml)	500	500	500	500
No. of Tetra Cartons	2	2	2	2
Altraplen Protein (ml)	700	700	700	700
No. of Bottles	3½	3½	3½	3½
Nutricrem (g)	565	565	565	565
No. of Pots	4½	4½	4½	4½
Foodlink Complete	Not suitable for sole source of nutrition			
Foodlink Complete with Fibre	Not suitable for sole source of nutrition			
Foodlink Extra	Not suitable for sole source of nutrition			
Altrashot	Not suitable for sole source of nutrition			
Altrajuce	Not suitable for sole source of nutrition			
Altrapro	Not suitable for sole source of nutrition			
Nutritionally complete volumes - Ireland Recommended Dietary Allowances, Food Safety Authority of Ireland 1999 (excluding electrolytes)				

Paediatric Products	Children 1-3 yrs	Children 4-6 yrs	Children 7-10 yrs
Altrini Compact Fibre (ml)	500	700	800
No. of Bottles	4 x 125ml	5.6 x 125ml	6.4 x 125ml
Nutritionally complete volumes to meet EAR for energy and RNI for protein in children aged 1-10 years, excluding electrolytes			

Online Sample Service

Nualtra offer a free-of-charge sample service for clinicians that allows you to order products delivered either direct to your patients or to dietetic departments.

Nualtra Starter Packs are product-specific and are available for patients to try different flavours before requesting their preferred choice via their nearest pharmacy whilst also allowing the clinician to review compliance to a particular type of ONS.

Direct-To-Patient

Nualtra offer a next day, full tracked delivery service for direct-to-patient samples ordered before 2pm. This service offers starter packs only and enables your patients to start ONS treatment as soon as possible following consultation.

HCP Samples

If your preference is to keep a stock of samples within your department to give to patients directly, use the HCP service where you can order specific flavours or starter packs.

Fully Mobile Responsive

The Nualtra Sample Website is fully mobile responsive meaning you can order your patient samples from your smartphone with the same simple usability and speed as you expect from your desktop computer.



Ordering Samples

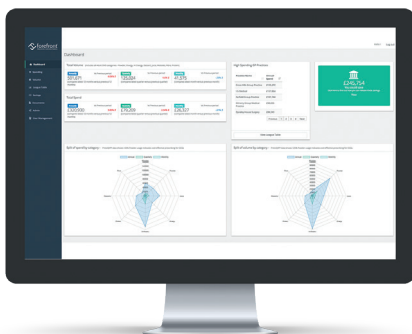
Visit our website: www.nualtra.com or scan the QR code to order HCP or Direct-to-patient samples.



Better insights and greater transparency

As the NHS continues its focus to get better value from medical nutrition prescribing, greater demands for cost efficiencies will be placed on GPs, medicines management and dietitians.

ForefrontRx.com is a dedicated platform for Adult ONS (Oral Nutritional Supplements) prescribing data, offering better insights and greater transparency of the savings opportunities in your organisation or department.



- ◆ Review your ICB's / Health Board's prescribing behaviour for medical nutrition, analysing trends in spend and volume.
- ◆ Identify highest spending GP practices and view potential savings opportunities at practice level.
- ◆ Compare your ICB versus demographically similar ICBs to understand how cost effective you are (England only).
- ◆ Access the Forefront toolkit including Standard Operating Procedures, Hospital Discharge Protocols, GP System Templates, Case Studies.

Notes



Republic of Ireland Office

Ground Floor Left of Roselawn Suite 1
Roselawn House
National Technology Park
Co. Limerick, Ireland
t: 0035361 518413
e: support@nualtra.ie

UK Office

Basepoint Business Centre
Tewkesbury
Gloucestershire GL20 8SD
t: 0118 4532853
e: support@nualtra.co.uk

Follow us @nualtra

